

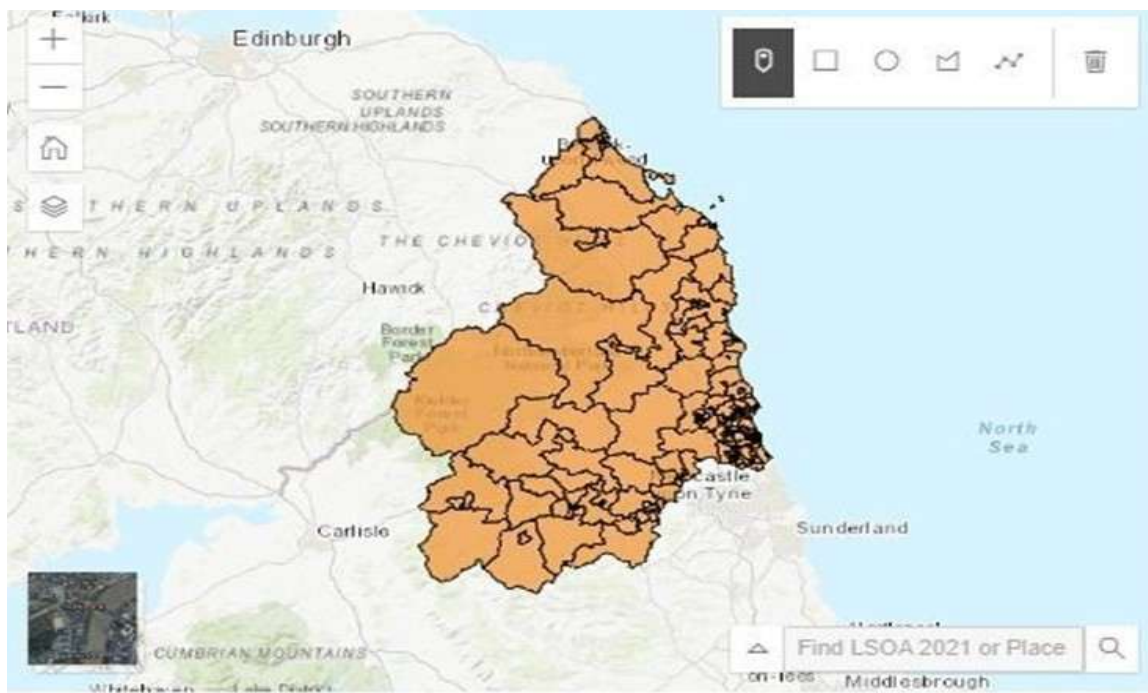
Custom Area Reporter - User Guide

Introduction

The Custom Area Reporter on the Northumberland Data Hub allows users to generate detailed statistical profiles for specific areas within Northumberland. This guide explains the steps involved in using the tool, including selecting areas on the map, choosing data themes, and downloading reports.

Accessing the Tool

1. From the home page click the interactive map OR select Tools > Customer Area Reporter. Or visit <https://datahub.northumberland.gov.uk/custom-area-reporter/> directly.
2. The landing page shows an interactive map where you can begin your selection.

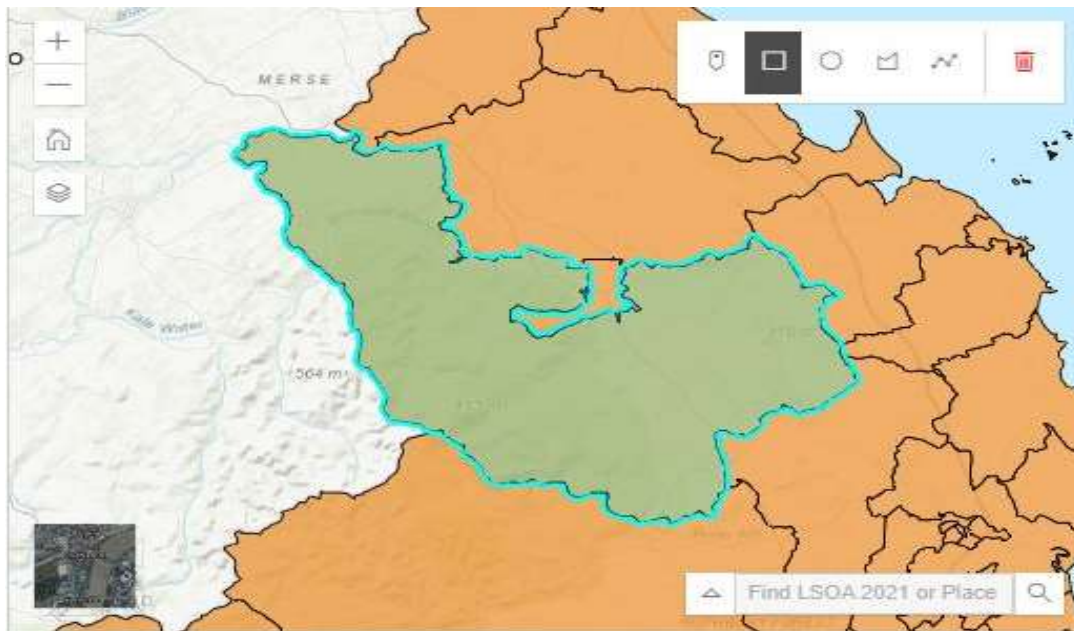


To get started, choose one of the drawing tools from the top right-hand side of the map, then click and drag on the map to select your features. Once you have drawn your custom area on the map, you will be able to choose a themed report from the Reports section below for your selected area.

Selecting a Geographic Area

You can select an area in several ways:

- Click individual areas on the map
- Use the box, polygon, or circle selection tools
- Hold SHIFT to select multiple non-adjacent areas
- Use the 'Clear' tool to reset your selection



Viewing and Customizing the Map

Use the map toolbar to:

- Pan and zoom on the map
- Change map base layers and boundaries
- Select specific geographic boundaries (e.g., wards, parishes)



Generating a Report

Once you've selected your area:

- Click 'Generate Report' to produce a profile
- Choose from different aggregation levels if available
- Reports will display a summary of selected indicators

Housing Report for Selected Areas*

*This report can be for one or more areas. The figures are aggregated from the selected areas. For rates, values are calculated using the underlying numerator and denominator. The areas selected in this report are: **Northumberland 003B, Northumberland 007B.**

Number of properties

Valuation Office Agency (2024)

1,930

Information on housing and households allows us to identify areas where people may be at risk of social exclusion, due to the type and condition of their housing or their household structure. This report displays data on the type and tenure of dwellings as well as the condition of housing in the selected areas.

Dwelling Counts

Dwelling counts are calculated from domestic property data for England and Wales extracted from the Valuation Office Agency's administrative database on 31st March each year. Data on property types have been used to form the following property categories of bungalows, flats/maisonettes, terraced houses, semi-detached houses and detached houses.



Downloading and Sharing Reports

You can download the report in formats like PDF or Excel. Use the print or export icons usually found at the top of the report viewer.



Report for Selected Areas*

Report for one or more areas. The figures are aggregated from the selected areas. For rates, values are calculated using the underlying numerator and denominator. The areas selected in this report are: **Northumberland 003B, Northumberland 007B.**

Number of properties

Valuation Office Agency (2024)

1,930

Information on housing and households allows us to identify areas where people may be at risk of social exclusion, due to the type and condition of their housing or their household structure. This report displays data on the type and tenure of dwellings as well as the condition of housing in the selected areas.

Tips and Additional Resources

- Combine multiple data themes for richer insights
- Revisit the tool regularly for updated data
- Refer to the Northumberland Knowledge section for deeper analysis

Exporting Data from the Custom Area Reporter

Introduction

This guide walks you through the process of exporting data using the Custom Area Reporter on the Northumberland Data Hub. We use 'Population' as the example indicator to demonstrate how to select a geographic area, generate a report, and export the data.

Step 1: Access the Custom Area Reporter

1. Go to: <https://datahub.northumberland.gov.uk/custom-area-reporter/>
2. The page will open with an interactive map interface.

Step 2: Select a Geographic Area

Use the selection tools (box, polygon, circle, or freehand) to choose the area of interest.

- For example, use the box tool to draw a selection over a specific town or ward.

Step 3: Choose the Population or any other Theme

Once the area is selected, a panel will appear showing available data themes.

- Choose the 'Population' theme to view related indicators like total population, age structure, etc.

Step 4: Generate and Export the Report

Click the 'Generate Report' button to create the profile for your selected area.

- Once the report is displayed, use the export options (PDF or Excel) to download the data.

Step 5: Save and Use the Data

Save the file to your computer and open it in your preferred program.

- You can use this data for presentations, planning documents, or further analysis in Excel or GIS tools.